



People Counter

Bi-Directional with display

1. Check the contents

- Receiver with display (PRx20D1)
- Transmitter (PTx20-1)
- Magnet key hanger
- 4 x 1.5v Alkaline batteries
- 2 x screws for locking box cover
- Screwdriver
- Installation guide

Specifications:

Max count value:	999999 in both directions
Power supply:	1.5v Alkaline battery
Battery life:	approx. 1 year
Measurement width:	8 metres
Dimensions:	116 x 70 x 26mm
Material:	ABS black

2. Place the batteries

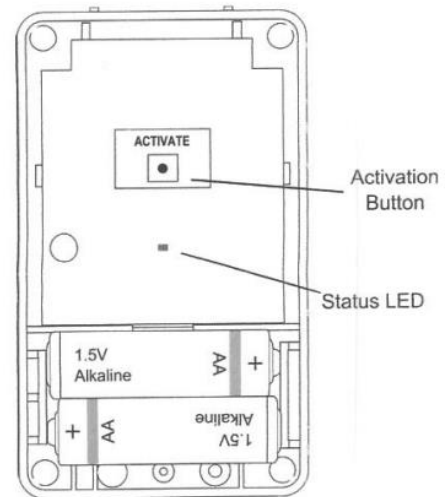
To power on the Transmitter (PTx20-1) and Receiver (PRx20D1) place the batteries into the battery compartment.

Please take note of the polarity of the batteries when placing them.

The display on the Receiver will show zero when the batteries are placed.

To Activate the Transmitter press and release the small Activation button (see below).

The status LED will blink twice during activation



3. Mount the People Counter

When mounting the people counter take care of the following:

- The maximum distance between transmitter and receiver is 8m
- to count adults, use a mounting height between 125cm and 140cm
- Avoid the possibility of obstacles blocking the line of sight of the People Counter.
- Use a wall or another steady object to mount the People Counter on.

Additional information:

Be aware of infrared light from other sources like bright lights and infrared devices. When the PRx20D1 receives infrared from other sources, instead of the PTx20-1, unexpected behaviour could be the result.

Due to the strong field of AM anti-shoplifting systems it is recommend placing the People Counter at least 1 metre away from an AM system.

Note: the red LED on the receiver will light up when noise is detected. In this case find the source of this disturbance and try to remove.

The measurement width of 8 metres will decrease when the infrared signal goes through goals or when full sunlight is shining directly on the receiver at a low angle.

ENI (Enhanced Noise Immunity)

The PRx20d1 is featured with ENI technology. This technology enables the PRx20D1 to work in environments where noise exists.

The above additional information is still important when there is too much disturbance in the environment. In that case red LED on the Receiver will light up.

4. Check the alignment

The receiver (display) needs to 'see' the transmitter.

The receiver contains an alignment feature which helps you to point the transmitter to the receiver.

To enable the alignment mode, slide the magnet on the top side of the receiver (display) [magnet area].

When the LED is blinking red you need to point the transmitter to the receiver until the LED lights up green continuously.

5. Start Counting

The count value on the display will count from 0 to 99999 for both directions separately. The green status LED on the receiver will blink once when a count is created.

Resetting the count value

To reset the value on the display to 0, slide the magnet over the topside of the receiver (PRx20D1).

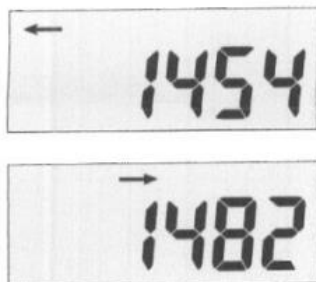
Note: the alignment made in the receiver will also be activated when resetting the display.

Slide again with the magnet over the top side to disable the alignment mode.

Determine the direction of the count value

When a count is made the display will immediately show the new count value of that direction.

The arrow above the account value shows the direction of the value.



When there is no activity, and no counts are made the display automatically switches between both directions.